



## PRECISION IN PLASTIC





## ARE YOUR GOALS SET HIGH?

The more global your action radius is, the more important strong local partners are, who are personally there for you at all times.

**atka** is your skilled and experienced partner where the development and manufacturing of plastic products is concerned.

We understand your demands and accompany you from the idea to the finished product. Innovative technologies help us to save energy and digital quality assurance systems help us to manufacture more efficiently for you.

You can profit from atka's plastic skills. Your assignment is in the very best of hands.

**Challenge us.**

# EXPERTISE IN PLASTICS

WITH MORE THAN 30 YEARS OF EXPERIENCE AND 120 EMPLOYEES  
WE DEVELOP AND MANUFACTURE PLASTIC ARTICLES, TOOLS AND  
CUSTOMISED MACHINES FOR ALL BRANCHES AT OUR FACTORY IN  
LOHNE, IN THE OLDENBURGER MÜNSTERLAND.







FOR US, PRECISION IN PLASTIC MEANS LEAVING NOTHING TO CHANCE. THEREFORE, OUR CUSTOMERS HOLD THEIR PROTOTYPE IN THEIR HANDS AFTER JUST A FEW DAYS.

▼ Dimension Elite - 3d printer for creating prototypes





# DEVELOPMENT & CONSTRUCTION

## FROM THE IDEA TO THE FINISHED PRODUCT

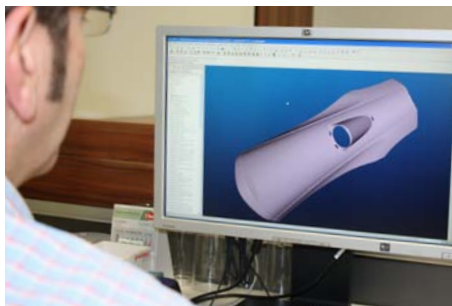
New plastic items are created to your instructions at our development department. At the beginning is the idea, we then work according to sketches, drawings, models or samples. In the detailed construction with the highest modern CAD software (Pro/Engineer, Solid-Works and Solid-CAM) your idea becomes reality.

Data forwarding to a rapid prototyping process runs equally as smoothly. For example functional prototypes are created in just a few days through a selective

internal laser or silicone casting method with digital 3D technology so that not only the finished product can be seen but at the same time this also provides the CAM data to construct the form.

Together with you we test suitability for the desired purpose using production samples.

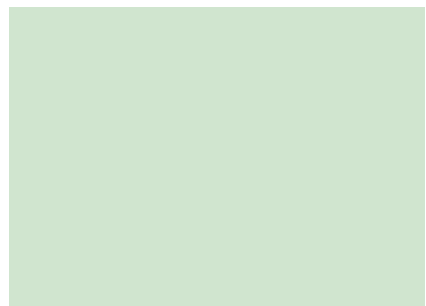
Take the chance to achieve competitive advantages with new and innovative solutions.







AT **atka** WE NOT ONLY HAVE GOOD IDEAS, WE ALSO PUT THESE INTO PRACTICE OURSELVES. OUR OWN TOOL MANUFACTURE IS A LOGICAL CONSEQUENCE.



# TOOL FORM MANUFACTURE

## THROUGH THESE TOOLS YOU CAN RECOGNISE THE MASTER

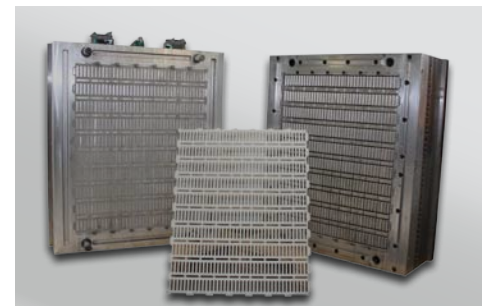
Whether it's precision series production tools for technical articles or prototype tools: our workers have the expertise and state-of-the-art CNC and HNC technologies at their disposal to guarantee precision and perfection in mould making while keeping an eye on costs.

Our performance has won the confidence of customers all over the world because we've got the basis under control. Years of experience, customer-friendliness, motivated workers and regular advancement of technologies in Germany that are already at the cutting edge.

We supply tools with a frame as large as 2200 mm x 1700 mm. Beyond this, we also supply innovative injection moulds with our state-of-the-art CAM programming and Moldflow analyses right here in our building.

**Today, we are already producing all high-performance tools at a fair price in our own tool factory using our future orientated technology and are not seeking the advantages of cheap manufacture overseas. We think this the right approach.**

▼ Speed Hawk – 3 and 5 axial processing with one machine





# INJECTION MOULDING

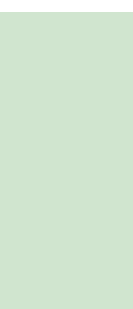
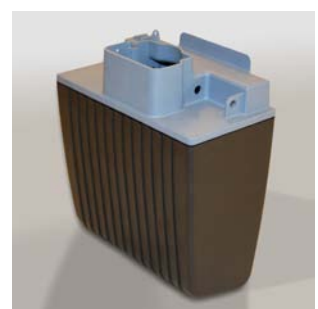
## A VARIETY OF FORMS IN ALL DIMENSIONS

**If you think there's nothing new in plastic injection moulding, you don't know atka.**

It doesn't matter whether it's thirty parts or three million, if it's **6 kilograms heavy or 1 gram light**, the way things have been done for years or an entirely new approach. We're proud to meet your specifications in whatever job you've got. It doesn't matter what the wall thickness is, if it's the gas-filled internal pressure process, plastic-metal combinations or with multiple-component injection.

**atka** produces more than 2,200 different plastic articles. MDE (machine-data recording) documents the quality standard in connection with the material, tool and machine (comparing the target with the actual value). This immediately identifies any limits during regular production and notifies the person in charge and quality assurance department with an LED display. That means that you can rely on the quality and on-time production 100%.

**You can therefore rely 100% on the quality and punctuality of our deliveries.**







## INCLUDING CERTIFIED QUALITY ASSURANCE

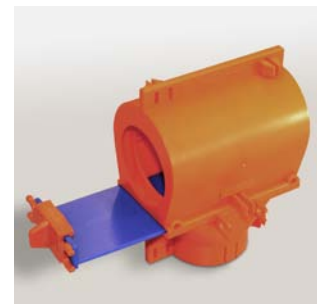
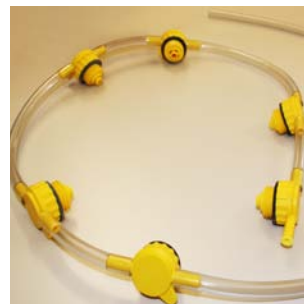
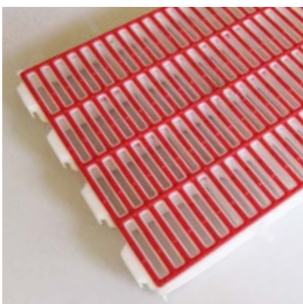
If you are looking at special projects we are happy to assist you and comprehensively advise you about our **modern tools with gas assisted moulding technology and tool forms for multi-component injection technology.**

Injection moulding with biological materials and inserted components are also included in our strengths. For very special manufacturing the plastic components can be finished with laminating, welding or with customised printing.

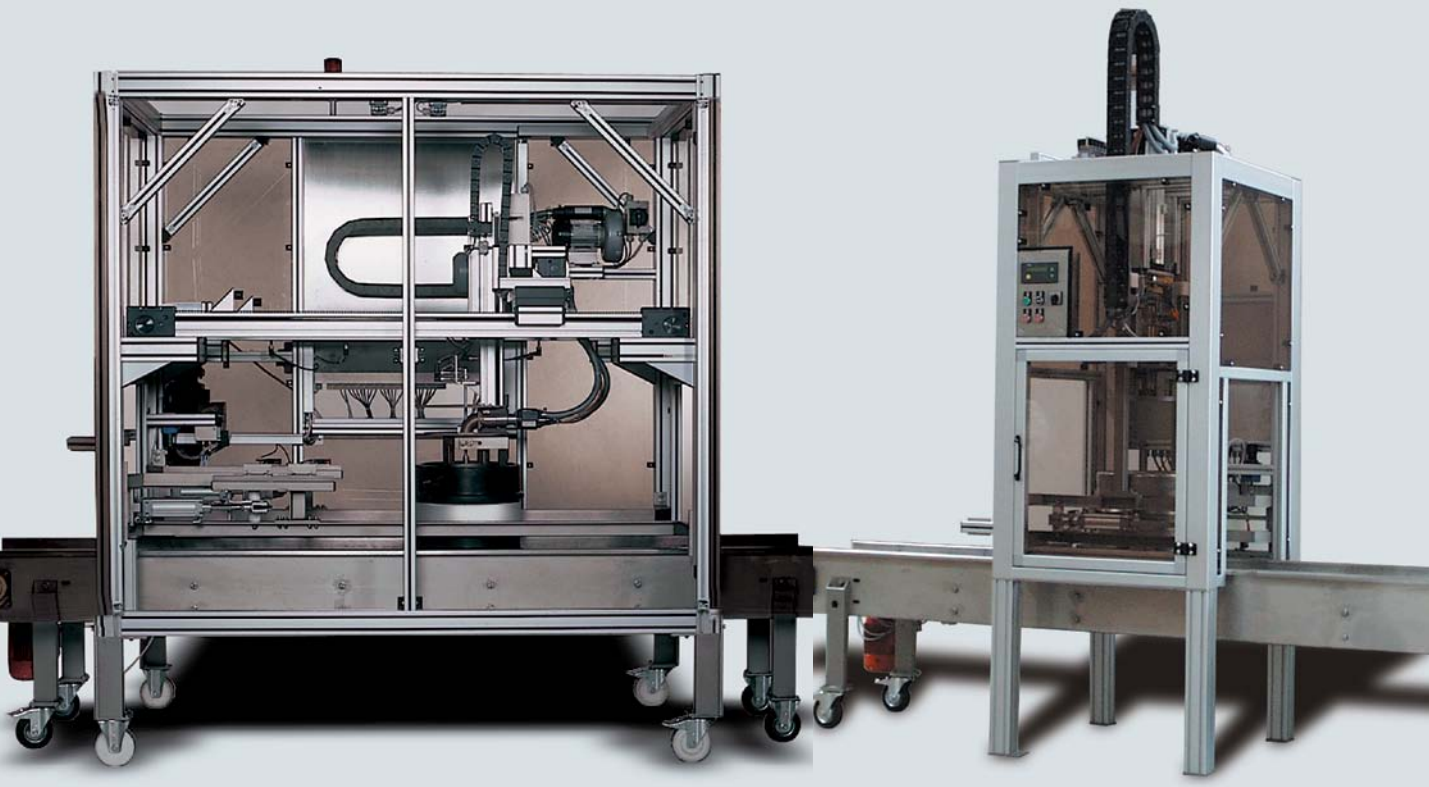
Our injection moulding machines have a locking force of 25 tonnes – 1000 tonnes and a maximum injection moulding weight of 6.5 kg. In addition, all machines with removal devices are automatic and are protocolled and analysed through a central computer.

Amongst other things, **atka** manufactures products for agricultural, and machine construction technologies, for the beverage industry, food industry, toy industry, automobile industry and medical technology.

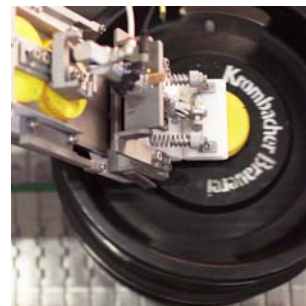
▼ Push floor with steel tubing, plastic and metal combinations







WE COME UP WITH AND BUILD SPECIAL CUSTOM MACHINES  
FOR INDUSTRY. OUR SIGL-CAPPERS AND COMBINED CAPPING  
AND SHRINKING MACHINES WORK ALL OVER THE WORLD.



# SPECIAL MACHINE CONSTRUCTION

## INDIVIDUAL SOLUTIONS

In addition, to the production of plastic articles, **atka** has its own special machine construction. We develop and construct individual customised machines for industry. Cappers and combined capping and shrinking machines serve for example to seal beer kegs with SIGL caps made of plastic to prevent the misuse of kegs by third parties.

Our second focus lies in improving the production process of, for example, injection moulding machines. **atka** builds its own handling, removal devices and packaging machines with SPS controls for a fast and safe production process for injection moulding machines.

**Our experts develop precisely suitable technical solutions for exactly your situation that open new paths.**

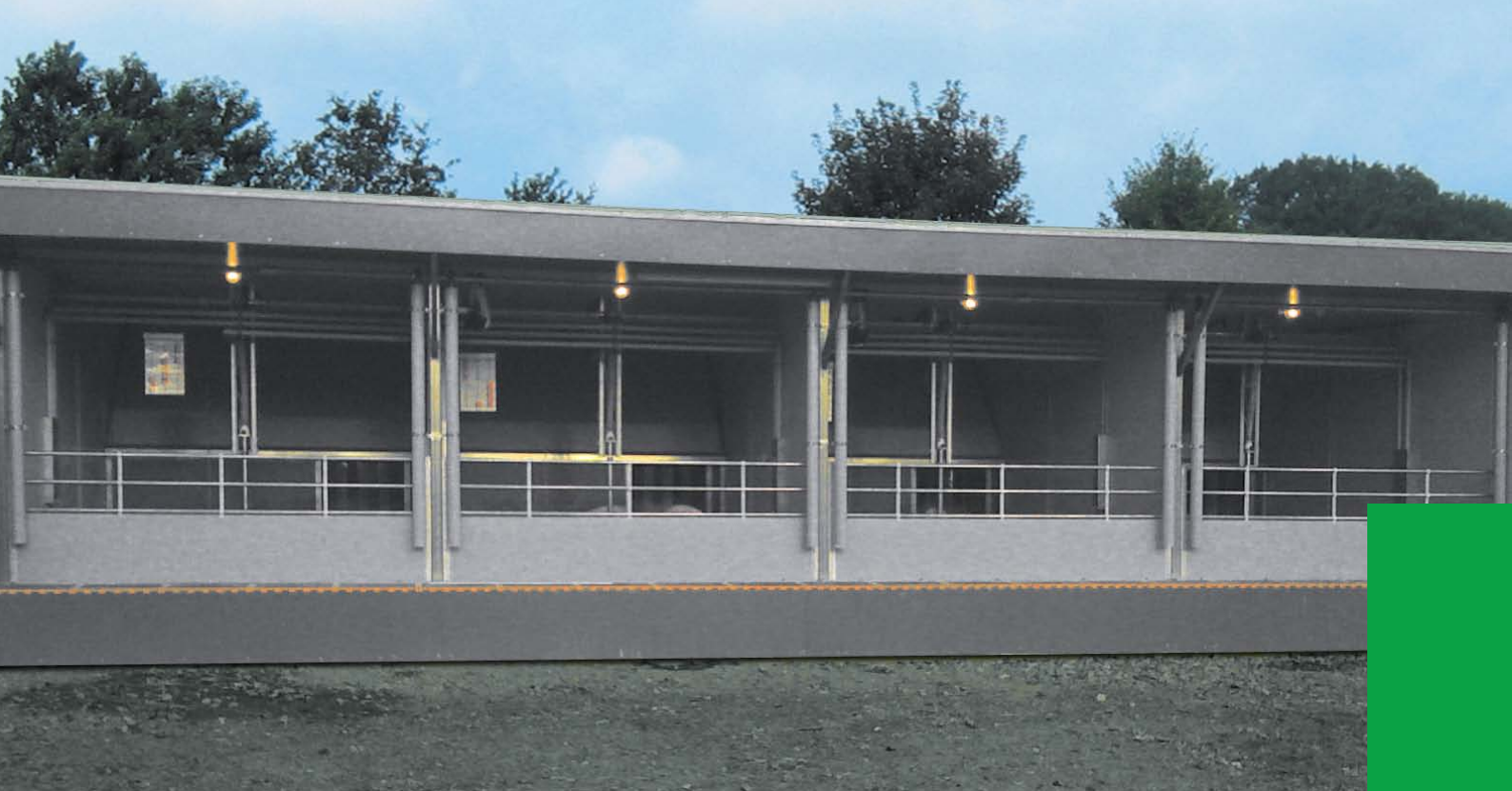
▼ Depalletizer



▼ stacking machine



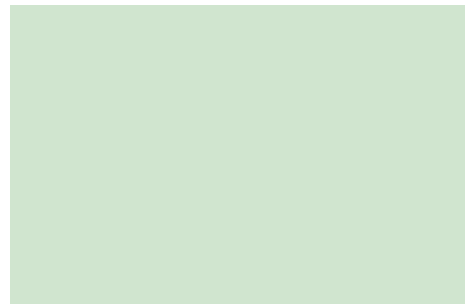
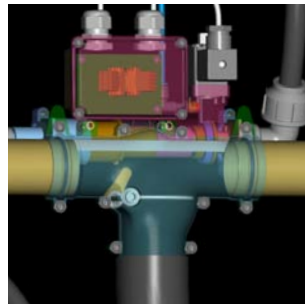




▲ Atka energy saver stalls - comfortable and heathy stalls for pigs

THE COMPLETE STALL CONCEPT FROM A CLIMATISED STALL TO FEEDING SYSTEMS, TO FULLY AUTOMATIC MUCKING OUT SYSTEMS ARE AVAILABLE FROM ATKA. ASK US AND WE ARE HAPPY TO PROVIDE YOU WITH INFORMATION AND TO HELP YOU WITH PLANNING.

▼ Branch valve





## AGRICULTURAL PRODUCTS

### OUR GRATINGS ENSURES NO SLIPPING

**atka** has been developing and producing plastic products for farmers for more than 30 years. Well-known customers sell our stall components across the globe. Our experience, our know-how and the use of innovative technology guarantee the highest quality of our products, the use of high-performance plastics that are customised to the special conditions in stalls guarantee a long life.

**atka** delivers for example, hygienic floor systems for farrowing, piglet rearing and swill machines for piglet rearing, feeding systems through fully automatic cleaning machines to complete stall concepts.

**You get individual expert solutions entirely from one place with us.**







## TOPGREEN GREEN ROOF SYSTEM FROM atka

In a time of major climatic changes it is becoming increasingly important to build in an environmentally friendly way which preserves resources. The TOPGREEN green roof system from atka makes an important contribution to this objective. Professional roof planting restores to nature vital green areas which have been lost because of building. Harmful materials are bound and filtered, rainwater retained and heavy downpours flow away evenly.

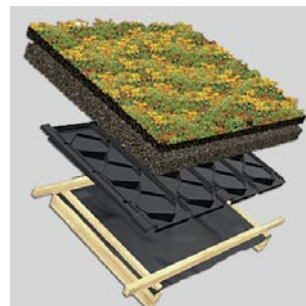
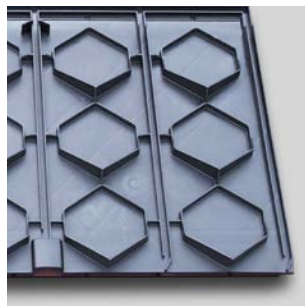
Green roofs also stand out for their excellent heat insulation in comparison to a conventional tiled roof. They also absorb annoying airborne noise and pro

tect your home against potentially harmful weather effects such as ice and hail.

The TOPGREEN green roof system can be installed on both flat roofs and pitched roofs with an inclination of up to 45°, setting no limit on creativity, either for the renovation of existing roofs or the construction of new houses with an environmentally friendly green roof. Under a green roof, this creates a calm and relaxing atmosphere, which has a soothing effect on your personal well-being.

**TOPGREEN green roof system – the professional way to turn your roof green.**

▼ More Information: [www.topgreen.atka.de](http://www.topgreen.atka.de)







## PRODUCTS

### BEVANDO - CRYSTALCLEAR GLASSES MADE OF POLYCARBONATE

#### Crystal clear – safe – bevando® !

Who really wants to celebrate, celebrates with bevando, the high-quality glass collection of the special plastic polycarbonate with its brilliant glass optic. The special character of bevando glasses is that they are unbreakable.

Your advantage: Where otherwise there is often excessive glass breakages, your glasses remain undamaged. In contrast to disposable glasses all bevando glasses are reusable and withstand repeated dishwasher

cleaning without losing their shine. As they can be used repeatedly, valuable resources are saved for manufacture and also the amount of waste after the party is visibly reduced in comparison to the use of disposable glasses.

The bevando collection includes numerous different forms of glasses such as beer glasses, apple wine glasses, prosecco flutes, long drink glasses, shot and digestif glasses.

**Finally, 100% safe party fun without breakage!**

▼ More information: [www.bevando.de](http://www.bevando.de)





**atka Kunststoffverarbeitung GmbH**

Südring 25 · 49393 Lohne

Phone +49 (0) 44 42 / 92 68 - 0

Fax +49 (0) 44 42 / 92 68 - 11

E-Mail: [info@atka.de](mailto:info@atka.de)

Internet: [www.atka.de](http://www.atka.de)